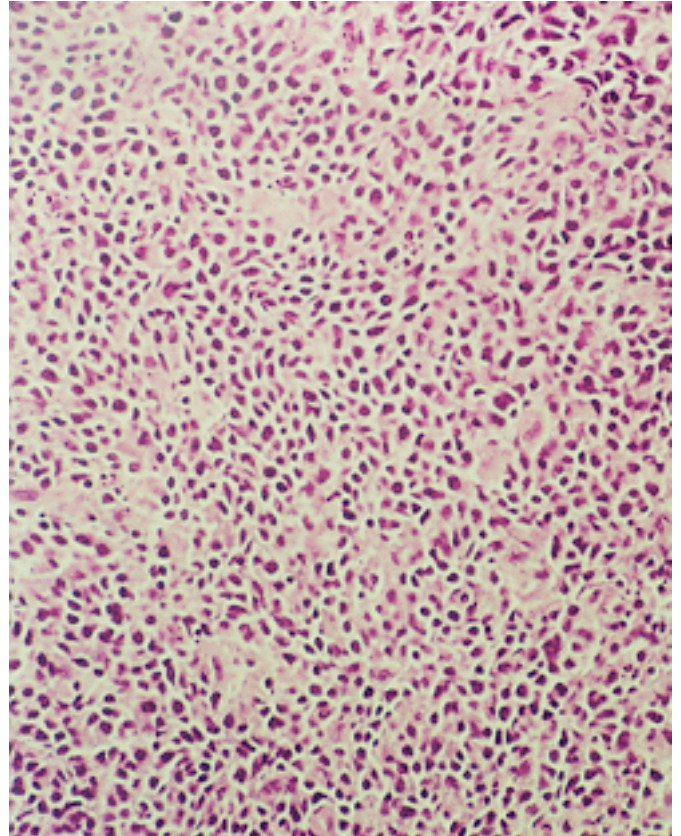


## Non-Hodgkin's Lymphoma

Non-Hodgkin's Lymphoma, small cell type. A monotonous population of small cells has effaced the normal lymph node architecture.



Lymphoma, diffuse large cell type. Large lymphoid cells with coarse chromatin and obvious nuclei are seen. Once again, the normal architecture of the lymph node has been affected.

